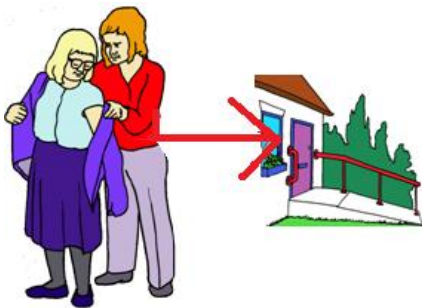




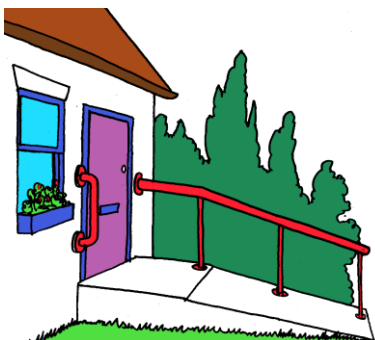
Extra Care



“Extra Care” helps people that need lots of care and support.



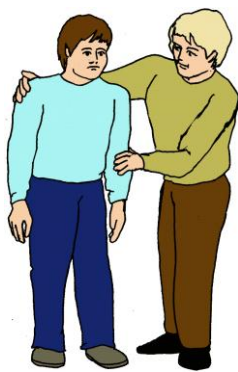
This is an “Extra Care Accommodation Scheme”
This is when “Extra Care” works together with housing providers.



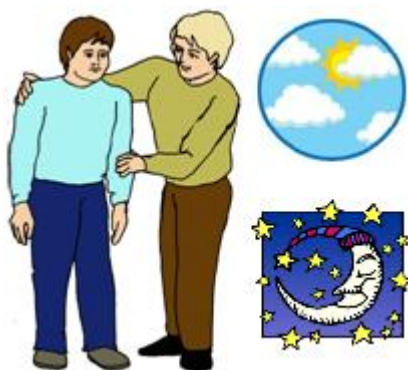
It helps people that need a place to live.



It also helps people that need lots of care and support



There is always a person there to help you.



They are their day and night.

Help is there when you need it.



There are Extra Care schemes in these places:



Colchester



Clacton



Waltham Abbey

To find out more telephone:



01 20 65 64 98 5

01 99 27 67 72 5