

Social Enterprises



“Essex Cares” owns lots of **social enterprises**



The ‘social enterprises’ **teach** people new things



You start to feel what it is like to **work**



Lots of things we do we **sell** to customers

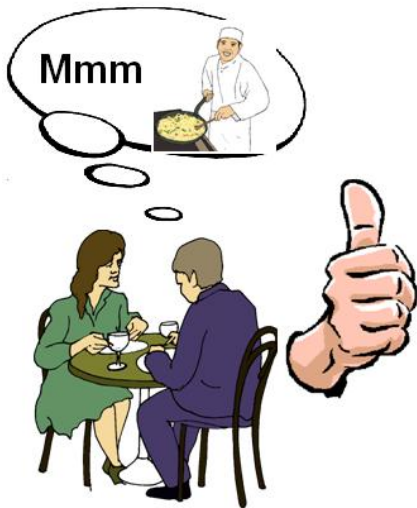


Any **extra money** is spent on making things **even better**



People with a learning disability work in the social enterprises

They are called **trainees**



You **learn** about going to **work**.



You **train** to do **new things**



Certificates are given to you, for all your **hard work**

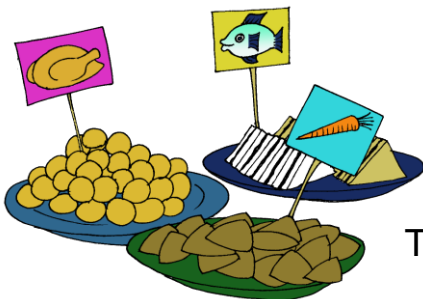


Here are some of the things that the social enterprises do:



Conference Facilities

This is a place where people can have meetings.



We make **drinks** and **snacks** as part of the service. This is called a **buffet**



Essex Cares Cafes



We sell **snacks**, **lunch** and **drinks** in our friendly cafes



People have training in **health** and **safety**



Garden and Horticultural Centres



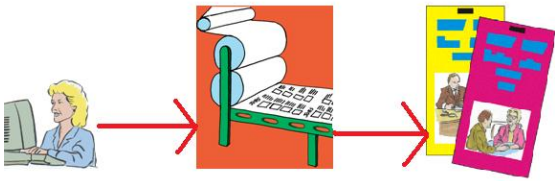
We make our **gardens** look very beautiful



The plants and flowers are **grown by trainees**



These are on sale at our garden centres



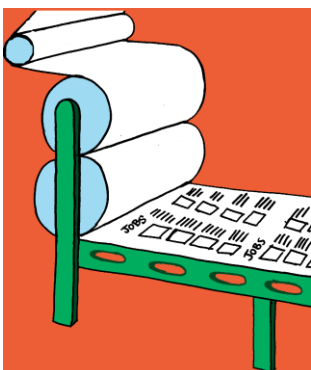
Printing and Copying



Trainees can learn how to make leaflets and brochures.



The words and pictures are put together using a **computer**



Lots of leaflets are printed on a machine called a **printer**



The leaflets are **cut and folded**



Then they are ready to give to the **customer**
